

AI Based Dental CAD Solution

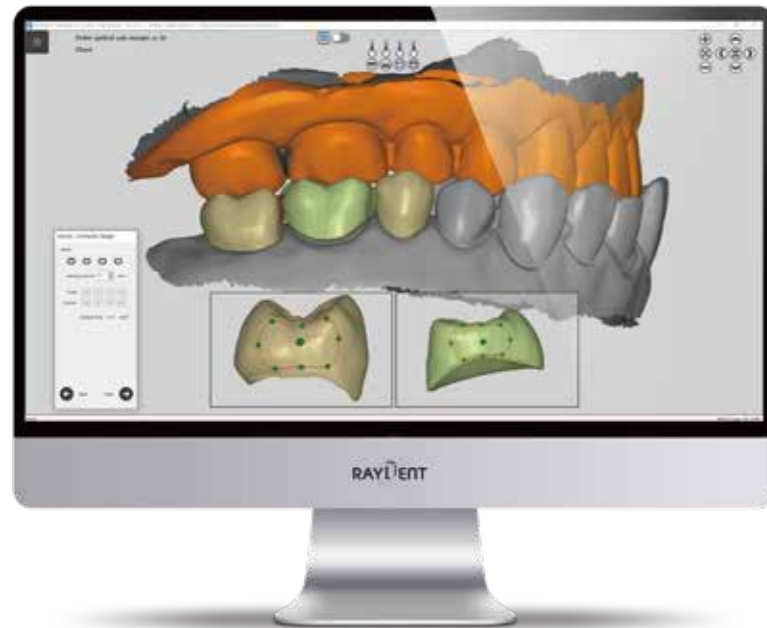
RAYDENT CAD



# RAYDENT designer AI

## AI-driven patient-specific crown design

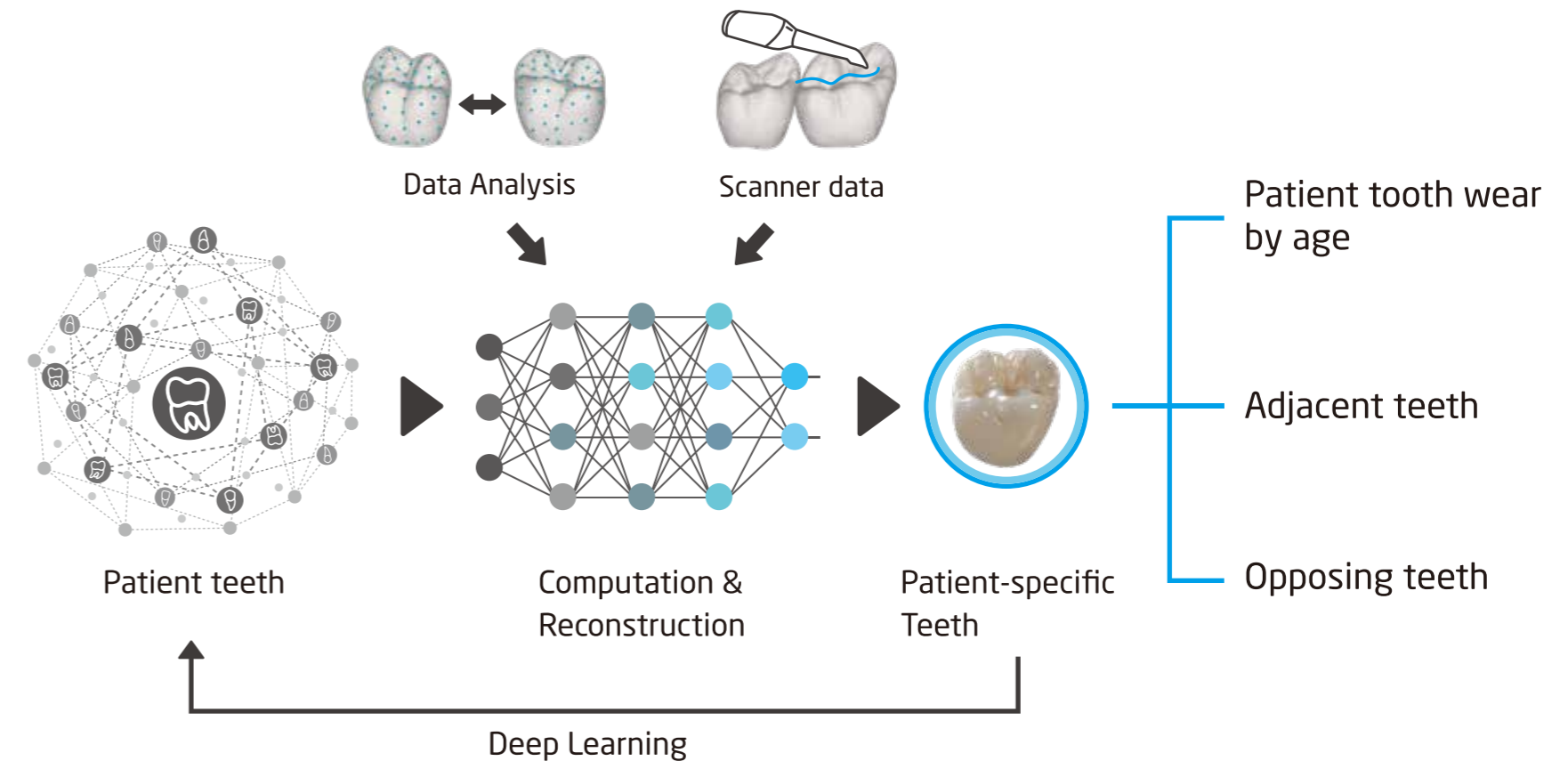
Anyone can easily design crowns in the dental office.



- Automated crown, inlay and onlay design
- All shapes of crown design possible using automated AI including Incisor, premolar, and molar
- Automatic margin detection by only two clicks
- Variety of possible applications: Crown, Bridge, Inlay/Onlay, Provisional crown & bridge, Crown shell, Veneer, Coping, Diagnostic wax-up, Simple SCRIP, and Model builder
- Occlusal adjustment feature (automatic or manual modes)
- Add user crown library
- STL export possible in any of design step
- Support exporting of standard STL file and milling file
- Connected to RAYDENT Studio (3D printer)
- Can be utilized by both dental offices and dental labs

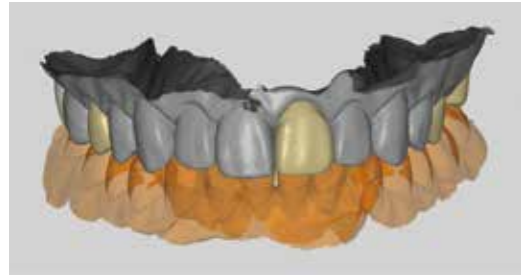
## Automated Crown Design Concept Using AI

AI crowns are designed by patient tooth wear by age and shapes of antagonist and adjacent teeth.

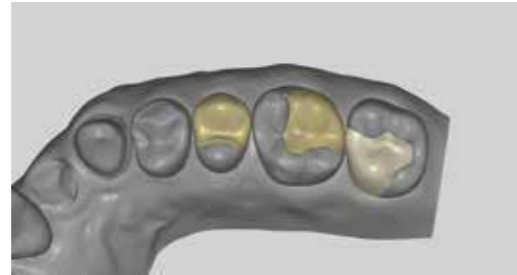


## Various Prosthetic design support

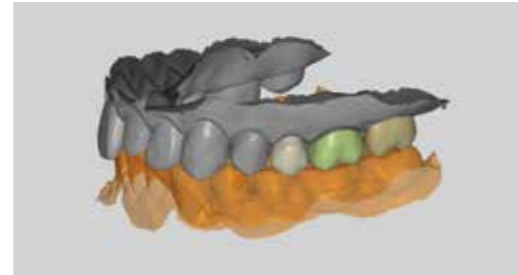
Dental offices and dental labs can use RAYDENT design AI for their prosthesis.



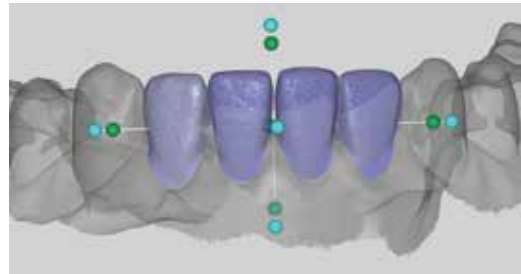
Crown/Coping (AI)



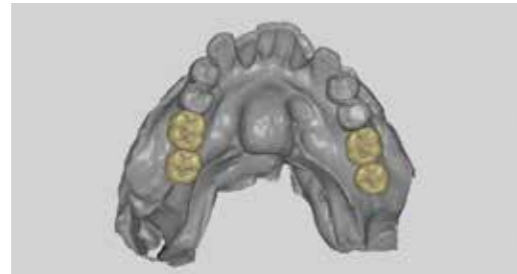
Inlay/Onlay (AI)



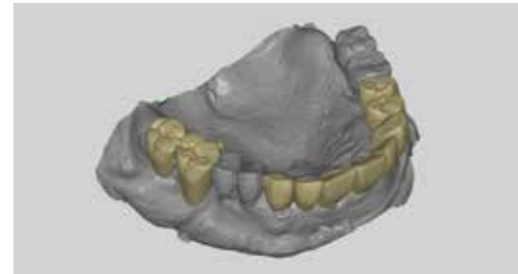
Bridge



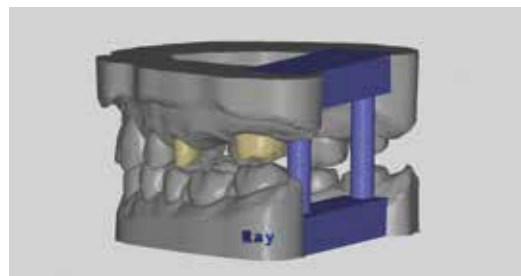
Provisional Crown/Bridge



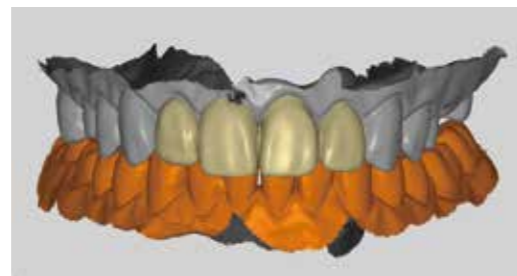
Crown shell



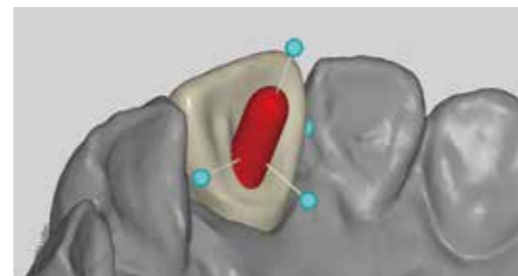
Diagnostic wax up



Model builder



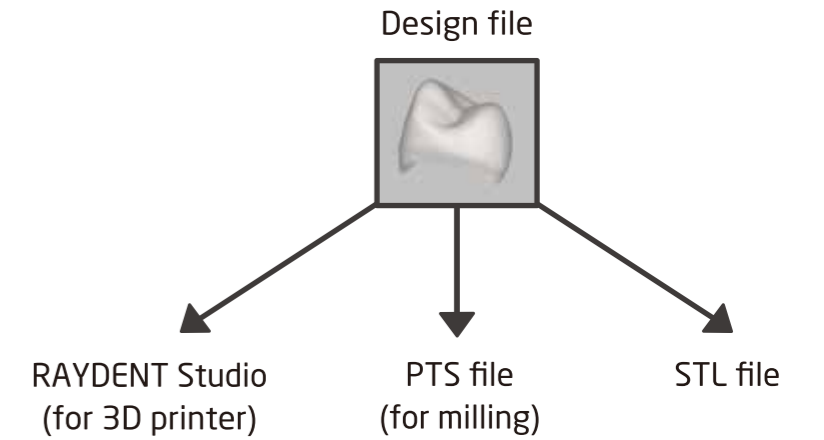
Veneer



Simple SCRIP

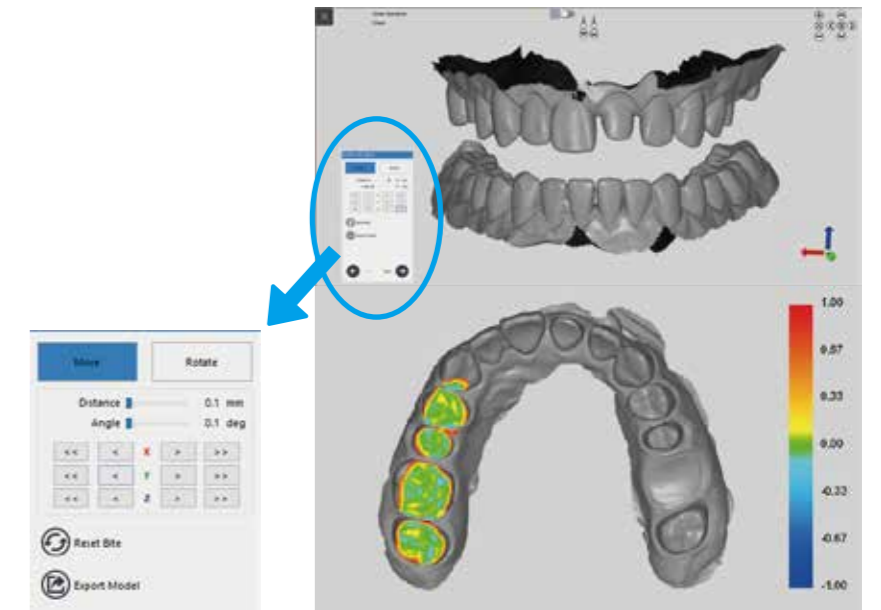
## Various Export options

- Print the designed prosthesis directly by RAYDENT Studio (3D printer).
- Milling the designed prosthesis by PTS file.
- STL file export and save available for all designing steps.



## Useful Utility Tools

- Automatic / manual occlusal adjustment
- Diagnostic wax-up for prosthetic driven implant planning
- Add user crown library
- STL file editing



Occlusal Adjustment (automatic / manual)

# RAYDENT splint

## Easy-to-Make Dental Splint

RAYDENT splint allows designing for splints by referencing patient condyle, night guards, crown lengthening guide.



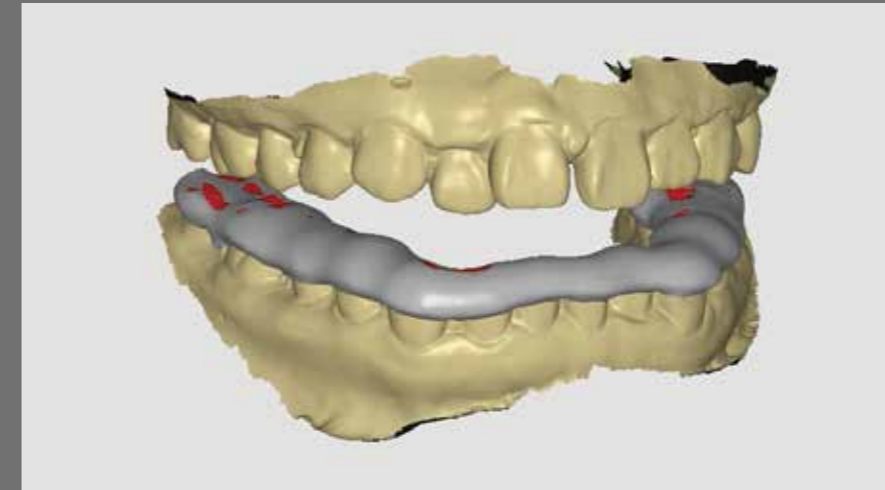
- Occlusal bite simulation
- Hinge axis setting referred by patient ceph
- Mouth opening range setting
- Standard STL file



Dental splint



Crown lengthening guide



## Dynamic Bite Simulation

Mandibular jaw movement can be reproduced by patient condyle from ceph.

Interference regions are automatically removed during the mandibular jaw movement.



## Mouth Opening Range Setting

Mouth opening range can be adjusted by patient condyle from patient ceph.

# RAYDENT tray

## Simple Made Customized Patient Tray in Dental Office

Easy-to-follow workflow allows custom tray in dental offices.



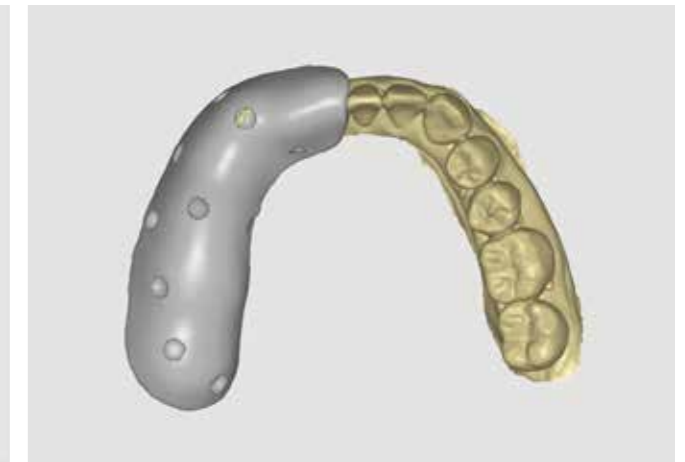
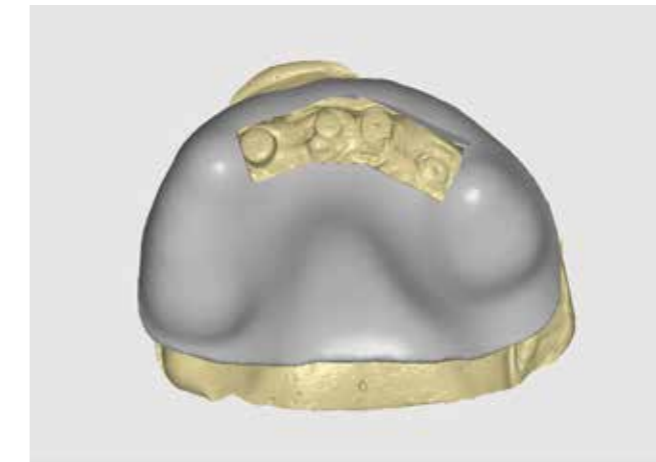
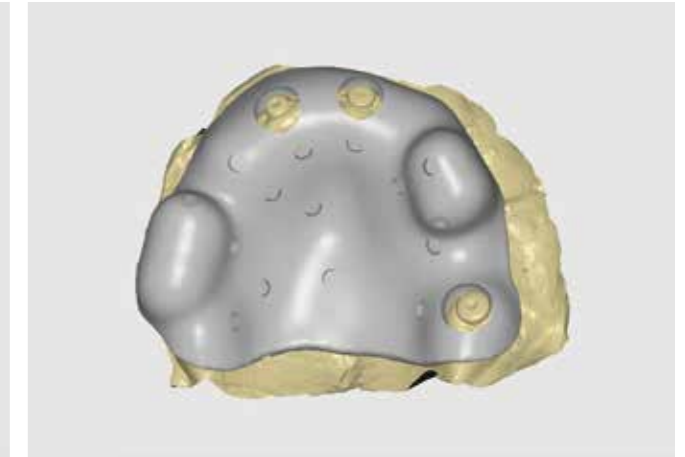
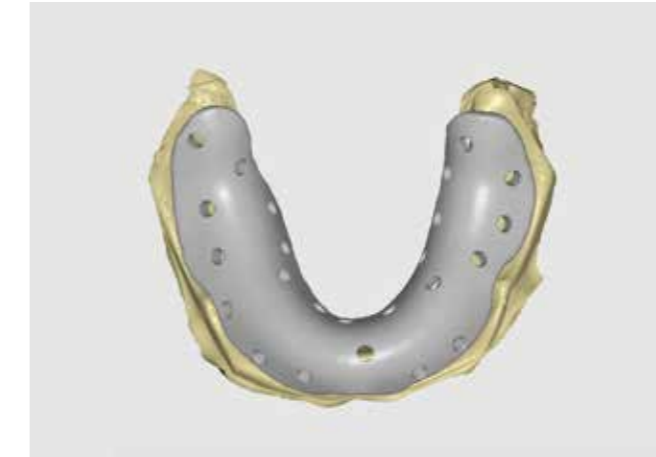
- Easy and fast personal tray fabrication
- Compatible with Ray DIGITAL TRAY™ (CT Impression scan enabled)
- Standard STL file
- Gutta Percha hole library for implant surgical guide
- For diagnosis and model fabrication
- Final impression tray for full denture cases

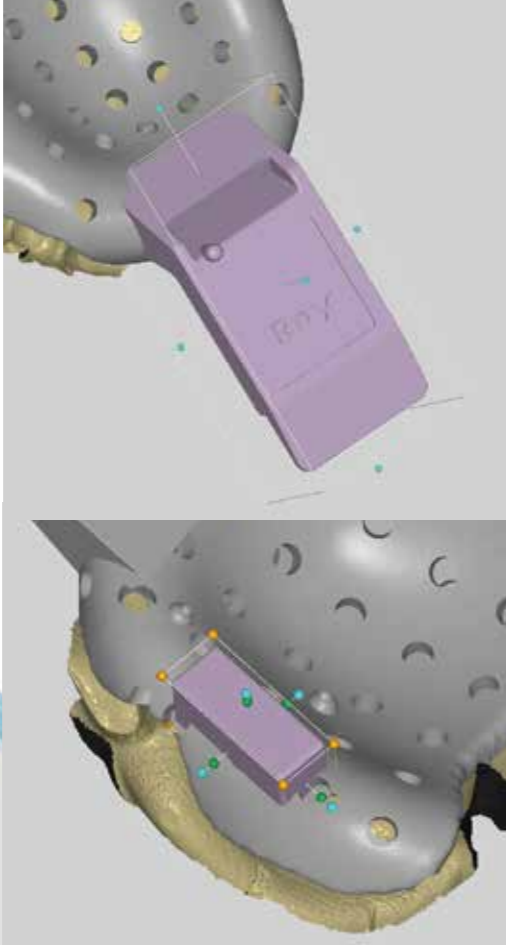
Teeth whitening tray



## Variety of Tray Shape Design

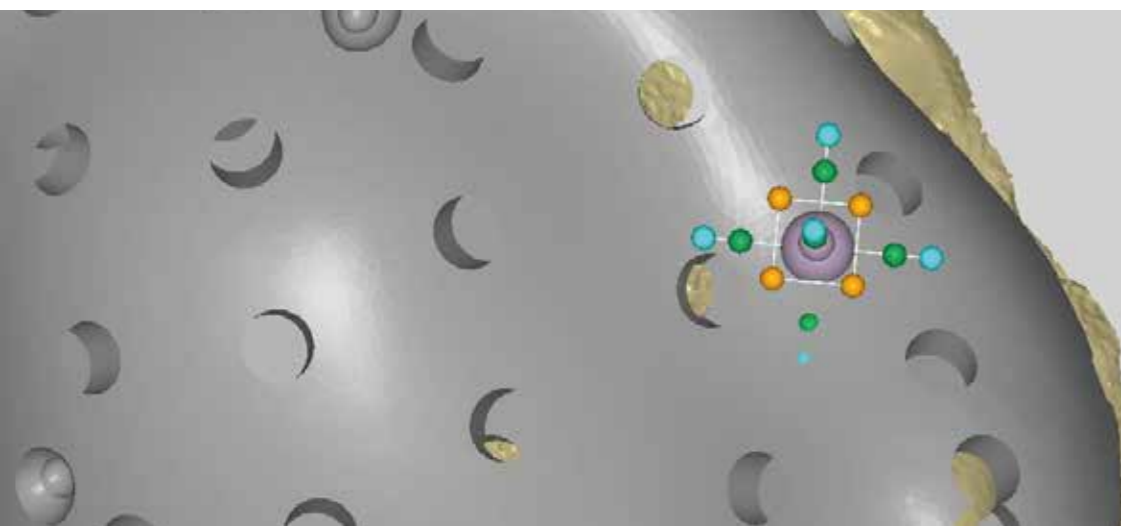
Different tray designs for various purposes such as Implant prosthesis, full denture, and precise impression.





## Utilizing Various Design Library

Various types of design libraries are available for use, including the libraries for Ray's CT impression scan jig and auxiliary handle.



## Gutta Percha Marker

Gutta Percha markers can be used to match CT data and STL files during implant surgery planning.

## System Requirement

	Minimum Specifications	Recommended Specifications
<b>CPU</b>	Intel 7th Gen Core i5	Intel 7th Gen Core i7
<b>RAM</b>	4GB	8GB
<b>Graphic Card</b>	NVidia GeForce GT840, 1GB Intel HD 620	NVidia GeForce GTX840, 2GB Intel HD 620
<b>HDD storage</b>	500GB	1,000GB
<b>Operating System</b>	Windows 7 64bit sp2	Windows 10 64bit
<b>Monitor Resolution</b>	1366x768	1920x1080



**Ray America Inc.**

725 River Road, Ste 118, Edgewater, NJ 07020, USA

**Phone** 1.800.976.4586

**Fax** 1.310.861.1911

**Email** [info@rayamerica.com](mailto:info@rayamerica.com)

**Web** [www.rayamerica.com](http://www.rayamerica.com)

** Ray Co., Ltd.**

332-7, Samsung1-ro, Hwaseong-si, Gyeonggi-do, 18380, Korea

**Phone** +82.31.605.1000

**Email** [ray\\_sales@raymedical.co.kr](mailto:ray_sales@raymedical.co.kr)

**Web** [www.raymedical.com](http://www.raymedical.com)

RBS-920 (rev.0)

Design and specifications are subject to change without notice